

Microsoft Windows 7

Search & Indexing malfunctions

By Jon Benjamin – www.exenvoid.com

After changing one of my own hard disk drive's letter (*to resolve another issue*) the Windows Search & Indexing service in my system 'blew a gasket'. I spent over 3 hours researching and trying out every available solution for this problem with no success until I stumbled across this gem.

This may not work for your own issue but it won't hurt to try if you have gone down the same time consuming and frustrating path that I went.

Follow these steps selecting with **single left mouse button** where the arrow points:

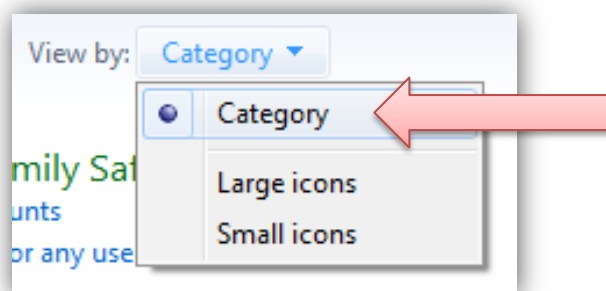
[Start]



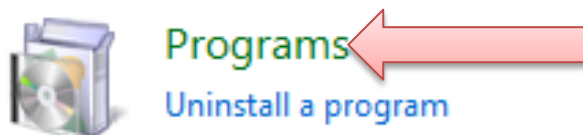
[Control Panel]



Switch View by : mode to **Category**

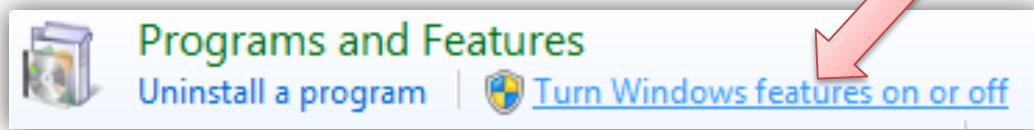


[Programs]



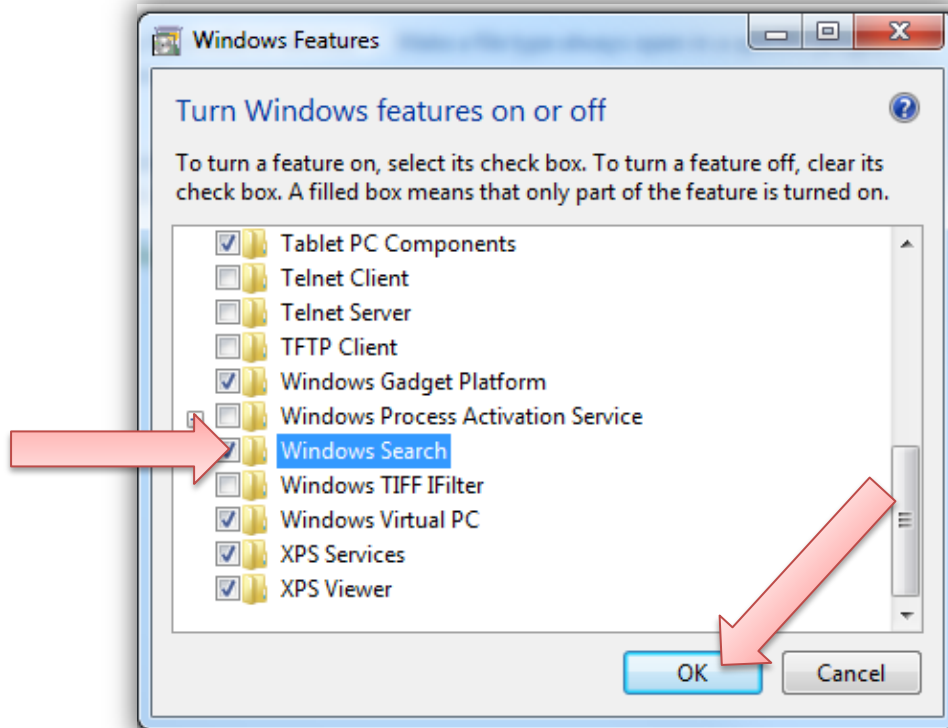
(Click the Green 'Programs' Word)

[Turn Windows features on or off]



On the next requestor, scroll down until you see **Windows Search**

[Remove the tick on Windows Search]



Select **[YES]** on the warning prompt

[Press OK]

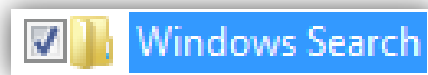
You will then be prompted to agree to a system restart. Follow the steps to restart the computer.

[Finally ...] Start at the beginning;

Start – Control panel – Programs – **Turn Windows Features on or off** ;

[Place a tick back on Windows Search]

Select [YES] on the following prompt



[Press OK]

You will then be prompted to agree to a system restart. Follow the steps to restart the computer.

Note:

To verify the Indexing service is repaired; Press **Start** – Type ‘index’
Select ‘**Indexing options**’ from the top of the list
If it is working, you will see various folder locations listed in the window

Hopefully your Search & Indexing system is now working again. It will take some time to rebuild the corrupted index so leave the computer to idle for a while without interruption whenever you can. Obviously you may need to adjust the various folders you originally had included or excluded in the indexing system to suit.

Tech Note:

For any technicians or ‘savvy’ users reading this, the following solutions to repair this issue were tried and failed **before** the above one worked;

- *Reverting hard drive letter to original: FAIL*
- *Indexing Service internal repair function: FAIL*
- *Stopping / Starting the service (in all combinations) : FAIL*
- *Manual & Automatic Registry repair: FAIL*
- *Automatic & manual Microsoft HOT FIX for issue: FAIL*
- *Rebuilding index: FAIL*
- *Manually recreating the C:\ProgramData\Microsoft\Search\Data Applications – Config & temp folders : FAIL*
- *SFC /SCANNOW : FAIL*

(I wish I had tried the successful one first ☺)