

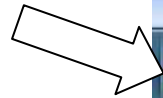
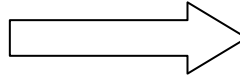


Microsoft Security Essentials

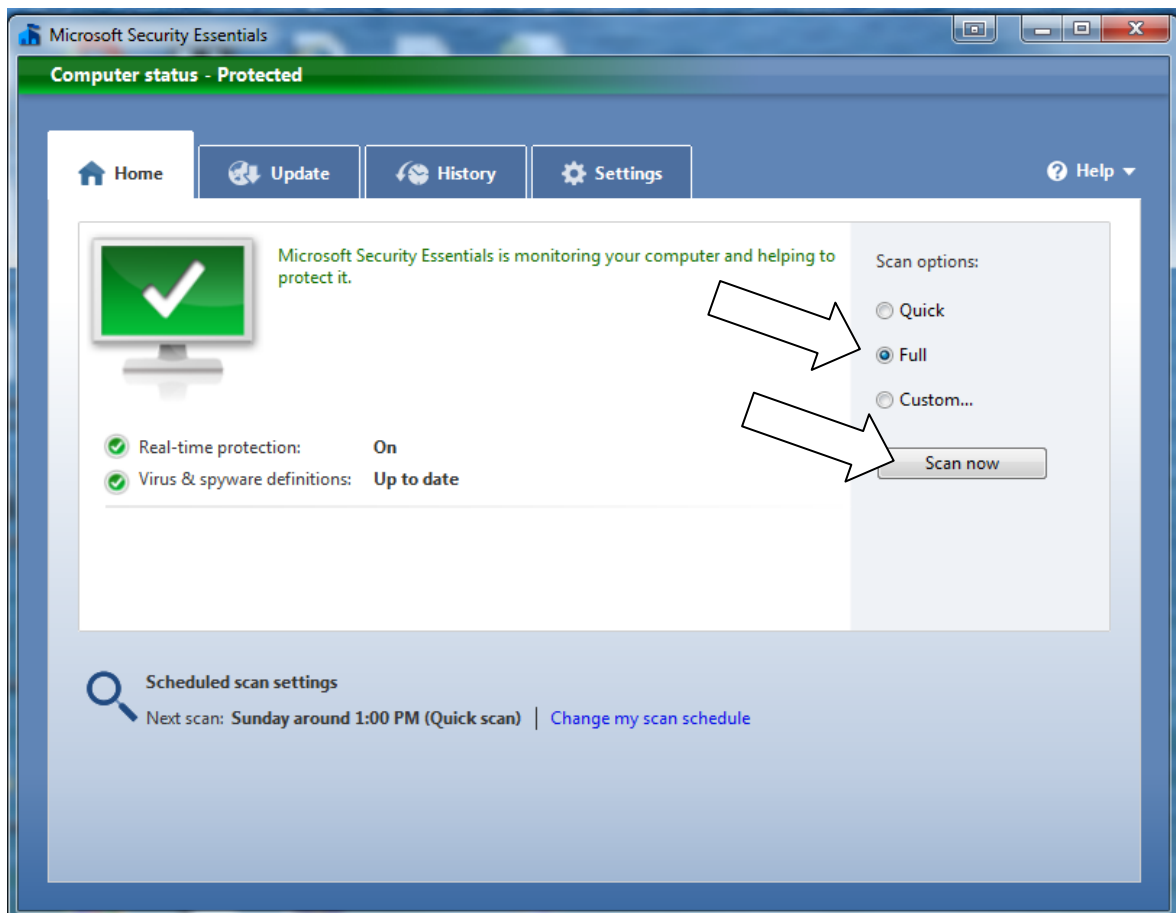


Full System Scan ~ main C: drive

Run the program control screen by [Double LEFT clicking] the icon shown on the right. It is either on your desktop or in your Security folder on the desktop. You can also access it by [Double LEFT clicking] on the 'Castle' icon on the lower right task bar. It is shown Green here but it may be Orange or Red if it requires attention



Now on this menu adjust the SCAN OPTIONS to FULL mode (tick the Full circle) and then press the SCAN NOW button. At this stage you can go and watch a movie o something as it will take a long time to do.



IMPORTANT ! WHEN THE FULL SCAN IS COMPLETE, PLEASE SWITCH THE SCAN MODE BACK TO [QUICK] FOR ITS NORMAL WEEKLY AUTOMATIC SCAN.