

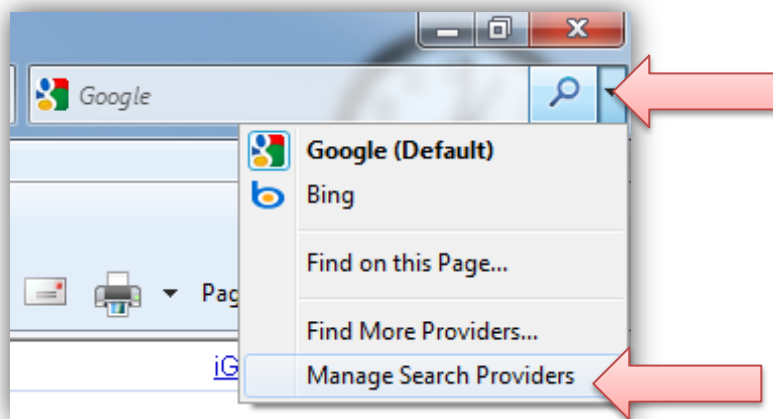
Managing your Search engine

By Jon Benjamin - www.exenvoid.com

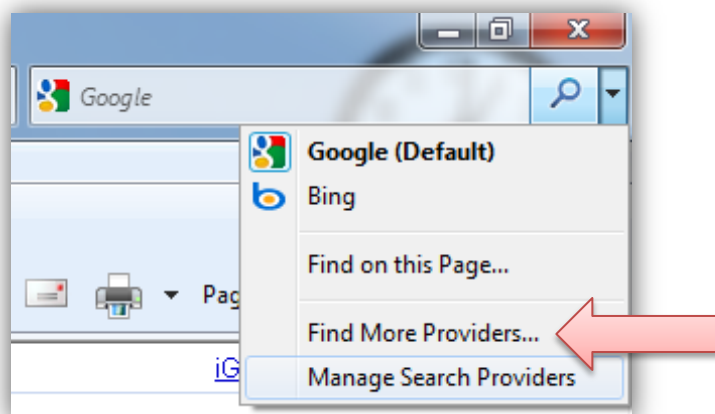
Search engines have now become a very competitive market and many new ones will do anything to get you to start using theirs instead of whichever one you actually prefer. They will use many devious tricks to confuse you but there is way to at least try to take back control. (*Mozilla Firefox instructions on page 4.*)

Internet Explorer 8.0

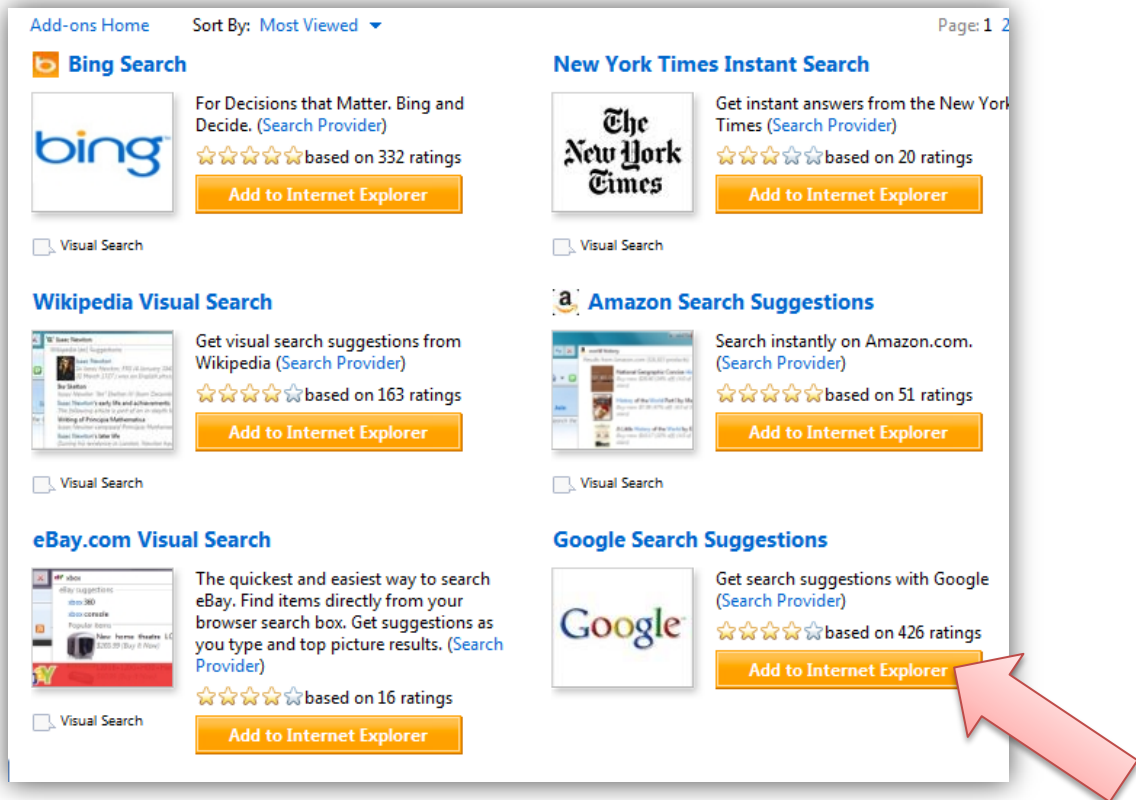
- Click the tiny 'Down' pointing triangle on the far right of the top menu bar. From this menu select 'Manage Search Providers'.



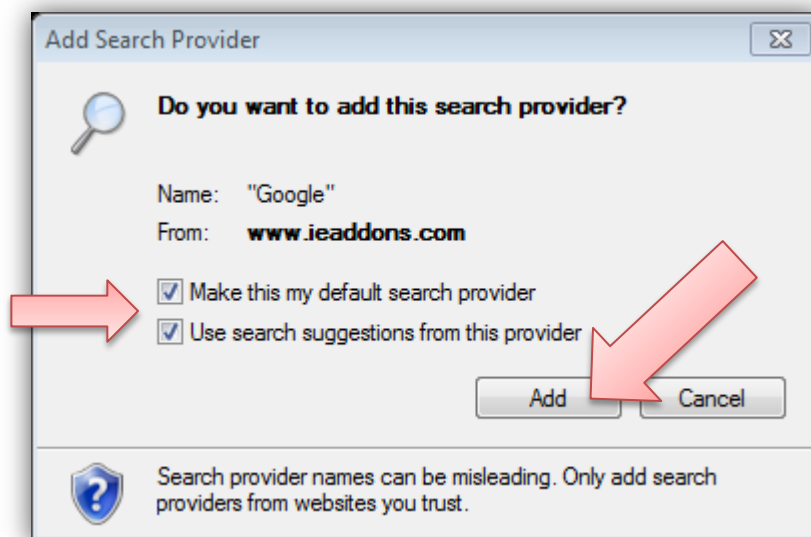
- The following screen will list your current search providers and it may or may not already show the one you want. If it does, skip the following steps and go to page 3. If it doesn't click the option 'Find more search providers' on the same menu



- The following screen will show many choices and for this demonstration I am going to choose 'Google'. Single LEFT click on the orange rectangle button 'Add to Internet Explorer'

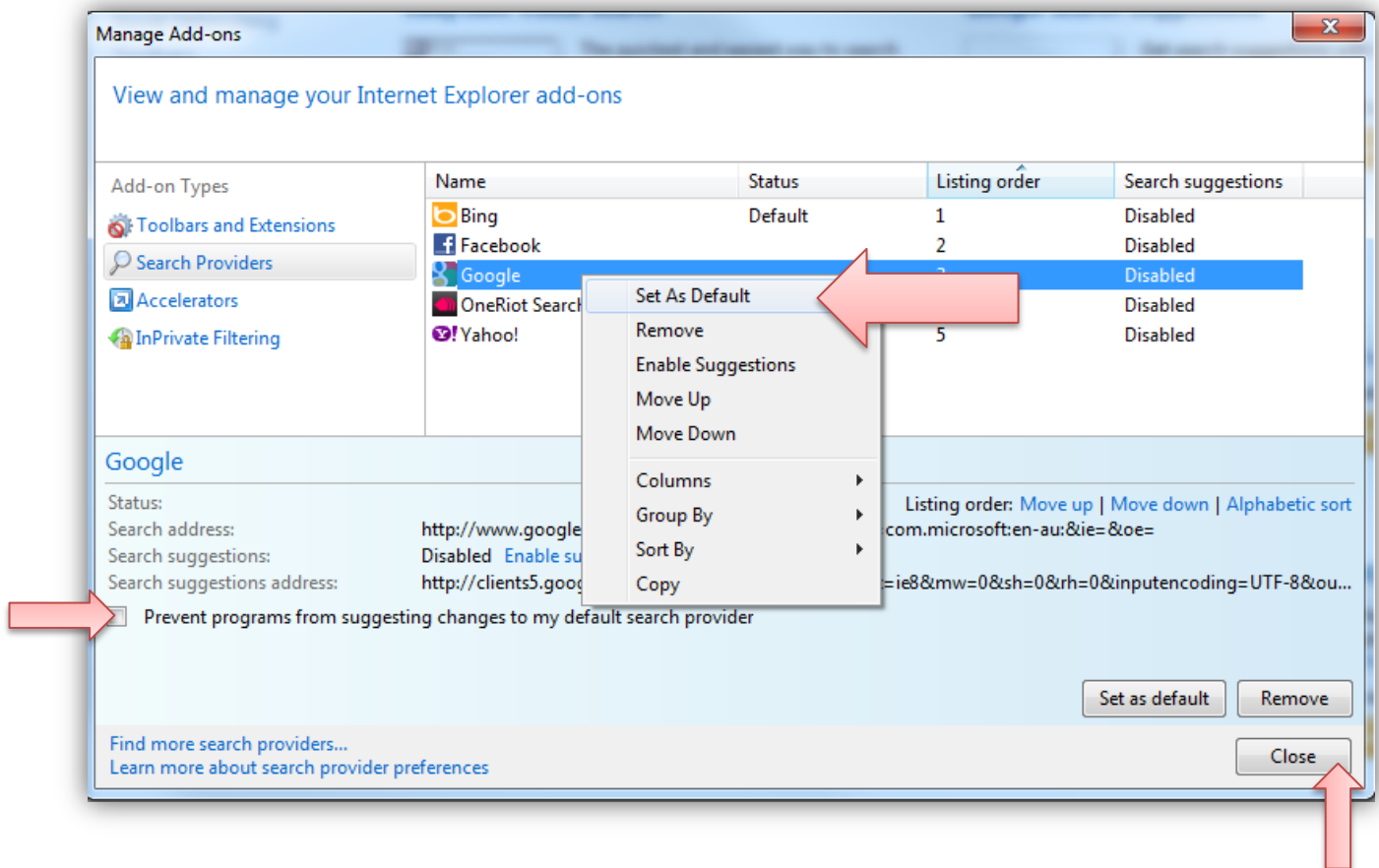


- Tick all the boxes on the following requestor and press the 'ADD' button.

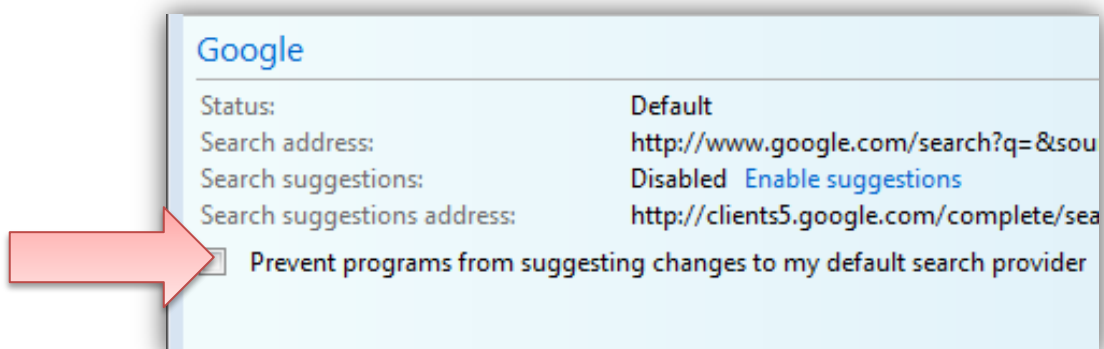


In the **Manage Search Provider section**, it may get a little tricky as the offending Search Provider that has taken over your browser will make it hard for you to change. The logic is to try to make the one YOU want become the default Search Engine, and to disable and remove all others.

- Right click on the one you want and select 'Set as Default' with the left mouse button. If that option is not yet available (greyed out) then try to disable / delete other ones first.

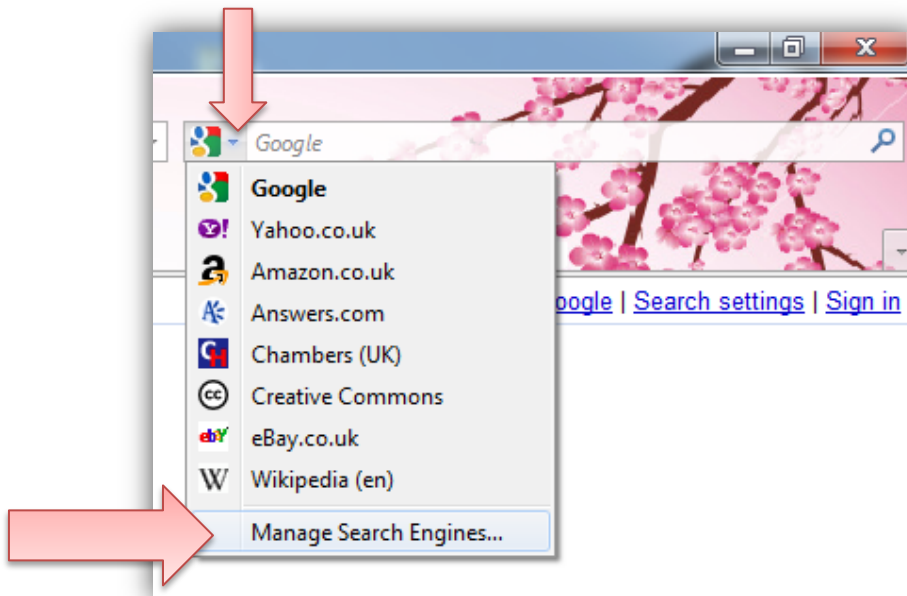


You may have to try several tactics but eventually you should be left with the search provider you want, set as the default. At this stage ensure you tick the box at the bottom to Prevent the problem again, and click **Close**.

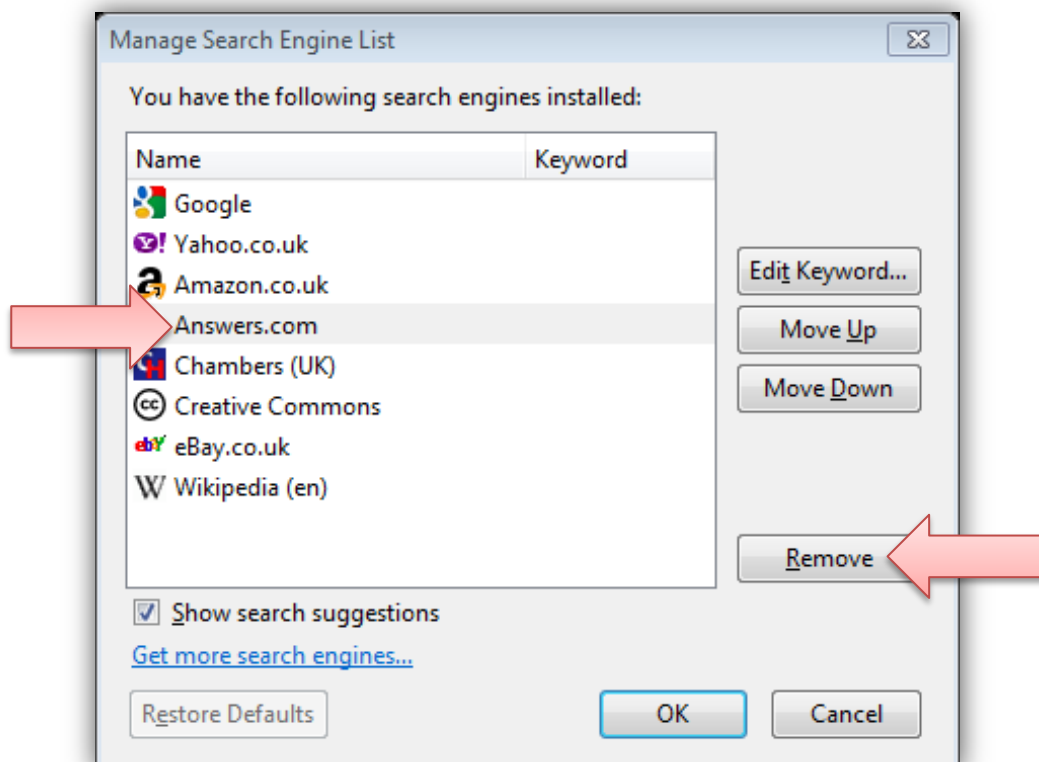


Mozilla Firefox 3.6.10

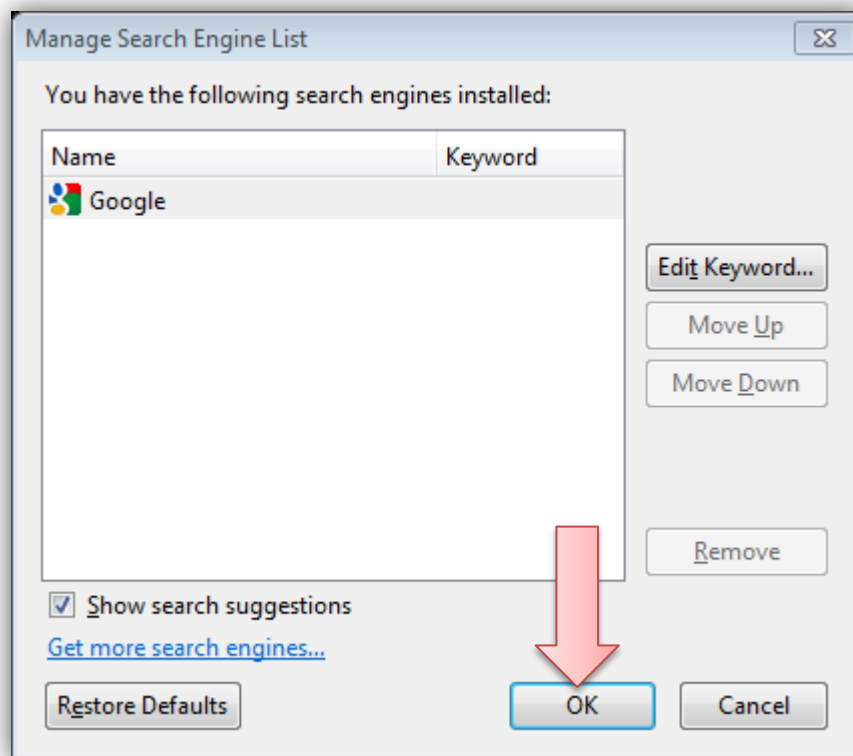
- Same logical steps as explorer but you start from top right side of the Browser menu bar and then the tiny 'Down' pointing triangle on the LEFT of the current provider to open the options. From this menu select 'Manage Search Providers'.



- Select each unwanted Search Provider (single left click) and select remove until you are left with the one you want.



Eventually you should be left with the one you want listed only, and press OK to close the option box.



Final notes:

So after all that, how did your search provider change in the first place ?

Yes it was YOU! 😊 It is very easy to be tricked into installing and changing your search provider and also adding ridiculous 'toolbars' to your browser. Watch carefully when you are accepting any updates or changes to your computer.

- *Many legitimate companies are paid to add competing search engines and browser toolbars into their products and future updates.*
- *Many useful free programs tools and utilities do the same.*

Watch carefully when you are installing things and accepting updates for your programs. Look for the hidden options to install these little nasties and remove them before continuing with the installation.